

Housing Sales--September 2011

Source: Washoe County Assessor

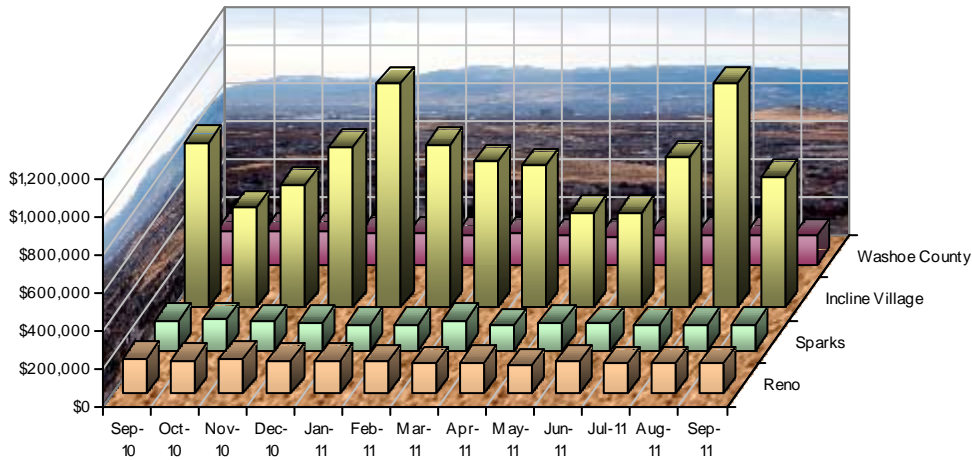
Age of Structure	September 2011				August 2011				Percent Change			September 2010				Percent Change		
	Number of Sales	Median Sales Price	Median Building SqFt	Median Price per SqFt	Number of Sales	Median Sales Price	Median Building SqFt	Median Price per SqFt	Number of Sales	Median Sales Price	Median Price per SqFt	Number of Sales	Median Sales Price	Median Building SqFt	Median Price per SqFt	Number of Sales	Median Sales Price	Median Price per SqFt
<i>City of Reno, Washoe County, Nevada</i>																		
Single Family Residence Sales																		
New	29	\$225,000	1,972	\$118	23	\$229,361	1,955	\$118	26.1%	-1.9%	0.2%	32	\$247,518	1,594	\$109	-9.4%	-9.1%	8.0%
Existing	290	\$149,000	1,676	\$90	283	\$155,000	1,647	\$93	2.5%	-3.9%	-3.1%	220	\$173,750	1,719	\$107	31.8%	-14.2%	-15.5%
New & Existing	319	\$160,000	1,722	\$92	306	\$159,900	1,675	\$95	4.2%	0.1%	-3.5%	252	\$186,046	1,711	\$107	26.6%	-14.0%	-14.1%
Condo Sales																		
New	1	\$394,811	2,164	\$182	0	\$0	0	\$0	0.0%	0.0%	0.0%	2	\$229,132	1,793	\$121	-50.0%	72.3%	50.8%
Existing	84	\$48,000	1,019	\$52	98	\$48,010	946	\$51	-14.3%	0.0%	1.8%	78	\$75,000	960	\$74	7.7%	-36.0%	-29.0%
New & Existing	85	\$51,500	1,017	\$55	98	\$48,010	946	\$51	-13.3%	7.3%	7.1%	80	\$81,500	977	\$75	6.3%	-36.8%	-26.3%
<i>City of Sparks, Washoe County, Nevada</i>																		
Single Family Residence Sales																		
New	6	\$251,914	2,100	\$120	9	\$216,000	1,933	\$111	-33.3%	16.6%	7.9%	5	\$168,990	0	\$91	20.0%	49.1%	32.4%
Existing	138	\$134,950	1,665	\$81	146	\$139,163	1,671	\$82	-5.5%	-3.0%	-1.0%	121	\$150,750	1,642	\$91	14.0%	-10.5%	-10.4%
New & Existing	144	\$140,500	1,711	\$82	155	\$141,000	1,706	\$84	-7.1%	-0.4%	-2.3%	126	\$156,250	1,653	\$91	14.3%	-10.1%	-9.7%
Condo Sales																		
New	0	\$0	0	\$0	0	\$0	0	\$0	0.0%	0.0%	0.0%	0	\$0	0	\$0	0.0%	0.0%	0.0%
Existing	20	\$44,500	1,139	\$39	16	\$45,000	1,139	\$44	25.0%	-1.1%	-10.5%	21	\$59,900	1,225	\$50	-4.8%	-25.7%	-21.2%
New & Existing	20	\$44,500	1,139	\$39	16	\$45,000	1,139	\$44	25.0%	-1.1%	-10.5%	21	\$59,900	1,225	\$50	-4.8%	-25.7%	-21.2%
<i>Incline Village, Washoe County, Nevada</i>																		
Single Family Residence Sales																		
New	0	\$0	0	\$0	0	\$0	0	\$0	0.0%	0.0%	0.0%	0	\$0	0	\$0	0.0%	0.0%	0.0%
Existing	14	\$693,750	2,506	\$288	9	\$1,185,000	2,478	\$351	55.6%	-41.5%	-18.0%	20	\$872,500	2,679	\$311	-30.0%	-20.5%	-7.6%
New & Existing	14	\$693,750	2,506	\$288	9	\$1,185,000	2,478	\$351	55.6%	-41.5%	-18.0%	20	\$872,500	2,679	\$311	-30.0%	-20.5%	-7.6%
Condo Sales																		
New	0	\$0	0	\$0	0	\$0	0	\$0	0.0%	0.0%	0.0%	0	\$0	0	\$0	0.0%	0.0%	0.0%
Existing	14	\$241,000	1,386	\$188	14	\$397,500	1,394	\$231	0.0%	-39.4%	-18.5%	15	\$245,000	1,232	\$198	-6.7%	-1.6%	-4.9%
New & Existing	14	\$241,000	1,386	\$188	14	\$397,500	1,394	\$231	0.0%	-39.4%	-18.5%	15	\$245,000	1,232	\$198	-6.7%	-1.6%	-4.9%
<i>Washoe County, Nevada</i>																		
Single Family Residence Sales																		
New	36	\$230,837	2,066	\$117	32	\$225,000	2,087	\$115	12.5%	2.6%	2.2%	40	\$238,201	1,594	\$107	-10.0%	-3.1%	9.6%
Existing	586	\$150,000	1,715	\$85	567	\$154,000	1,692	\$92	3.4%	-2.6%	-6.8%	484	\$170,845	1,723	\$100	21.1%	-12.2%	-14.9%
New & Existing	622	\$155,000	1,764	\$89	599	\$158,000	1,716	\$93	3.8%	-1.9%	-5.0%	524	\$179,900	1,723	\$101	18.7%	-13.8%	-12.2%
Condo Sales																		
New	1	\$394,811	2,164	\$182	0	\$0	0	\$0	0.0%	0.0%	0.0%	2	\$229,132	1,793	\$121	-50.0%	72.3%	50.8%
Existing	118	\$52,000	1,080	\$53	128	\$52,250	1,035	\$53	-7.8%	-0.5%	0.5%	114	\$89,750	1,075	\$75	3.5%	-42.1%	-29.2%
New & Existing	119	\$53,100	1,080	\$55	128	\$52,250	1,035	\$53	-7.0%	1.6%	4.8%	116	\$90,825	1,080	\$76	2.6%	-41.5%	-26.8%

Housing Sales--September 2011

Source: Washoe County Assessor

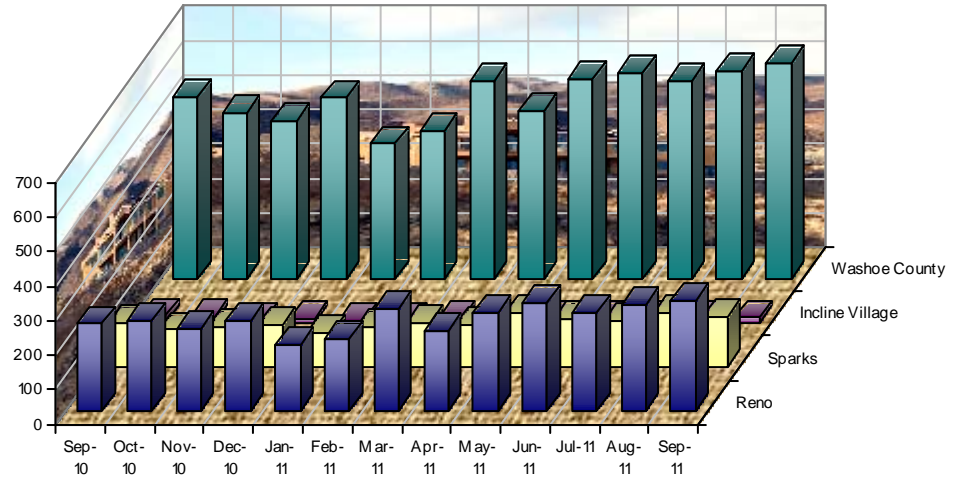
Median Sales Price

New & Existing Single Family



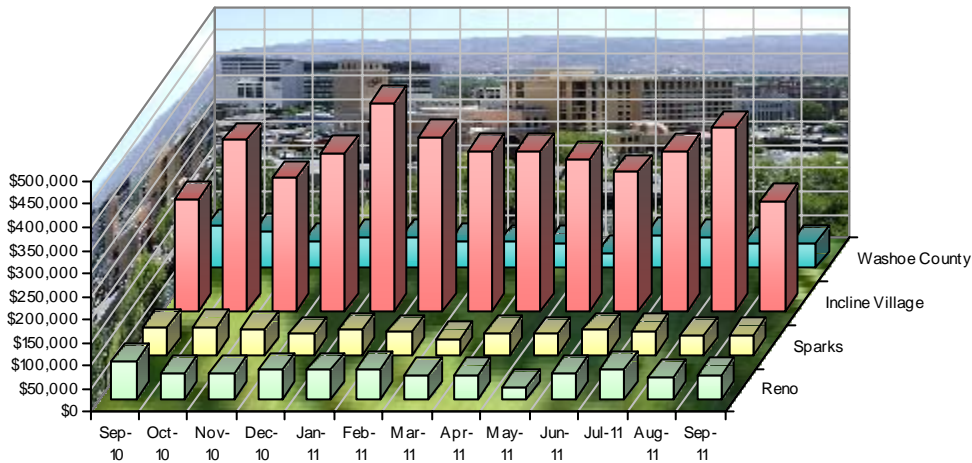
Number of Sales

New & Existing Single Family



Median Sales Price

New & Existing Condos



Number of Sales

New & Existing Condos

